



*Nordson compatible
heating hoses*

Heating Hoses developed and produced for Nordson glue systems are produced from hi-tech components. Heating Hoses are highly flexible for manual hand gun and robotic applications and extra strengthened to prevent external and internal structural deformation which may occur from dynamic movements.

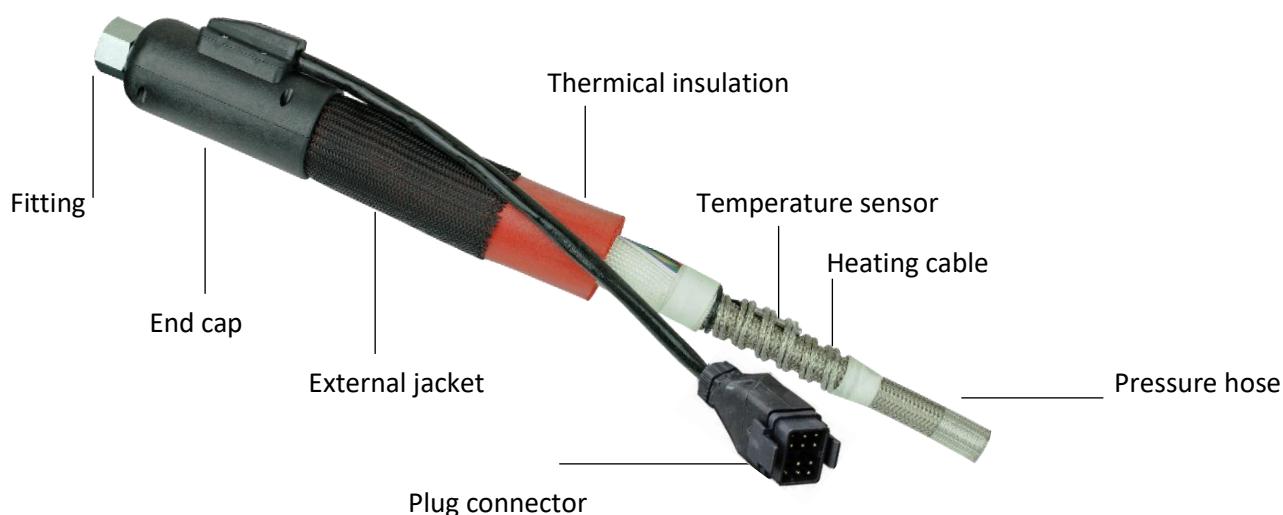
- 100% compliant with Nordson systems,
- High quality PTFE hose have a continuous working temperature of 260 C and a burst pressure of 4 times the working pressure,
- PTFE heavy-duty teflon internal structure is resistant to all solvents, acids and aggressive adhesives under high temperature operating conditions,
- Guarantees long lifetime when installed and used according to the instructions,
- Available with the ID 6 , 8 , 13 , 16 , 25 mm and any length between 0.4 m – 15 m.
- Available in Standard, High-Pressure and Water-Protected versions. Please refer to below tables.
- Can also be produced based on your specific requests.

Nordson Compatible Heated Hoses for Automatic Applicator , RTD Style , 230V , 5/8"

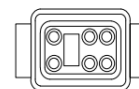
Hi-Flex Type. Blue series : 6000 , Melter series 3000/3000V

Length	Nordson P/N	OGAN P/N
1.2 m	129575	NN-129575
1.8 m	129576	NN-129576
2.4 m	129577	NN-129577
3.0 m	129578	NN-129578
3.6 m	129580	NN-129580
4.8 m	129581	NN-129581
6.0 m	1010811	NN-1010811
7.2 m	1010813	NN-1010813
2.4 m	1123928	NN-1123928
3.6 m	1123929	NN-1123929
4.8 m	1123926	NN-1123926
9.1 m	150155	NN-150155
12.0 m	150152	NN-150152





Hose Cordset Pin Configurations



1	Applicator heater	Heater	1
2	Applicator heater	Heater	2
3	Applicator RTD	RTD	3
5	Applicator / Hose RTD	RTD	5
4	Hose heater		
6	Hose heater		
8	Hose RTD		
7	Ground	Ground	⊥
11	Jump 8 with 11		
12	Jump 3 with 12		

General Specifications

Max. operating temperature	200 C
Voltage	230 V 50/60 Hz
Rated power	Watt / m. per desing
Pressure hose	PTFE T1
Fittings	1 1/16-12 UNF
Thermal insulation	Aramid + Silicon foam
External jacket	PA braid
End cap	Hard cap
Temperature sensor	Ni120
Plug connector	Nordson standard
Inner tube diameter	16 mm
Temperature limits	+ - 5 C
Protection type	IP54
Approvals	CE

T1 Type pressure Hoses

Flat internal structure, heavy duty PTFE hoses. Covered with a single layer of stainless steel braid

Max. working temperature **250 C**



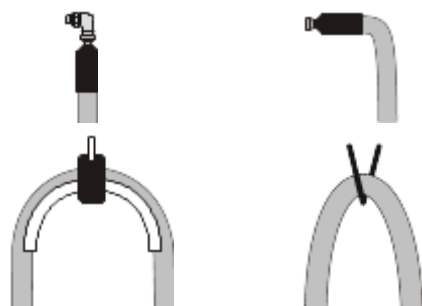
Inside diameter	DN	4	6	8	10	13	16	20	25
Max. working	bar	250	230	200	175	150	125	100	80
Max. Bursting	bar	1000	920	800	700	600	500	400	320
Minimum Radius	mm	50	60	100	120	135	165	190	250

Max. working pressure are given at 24 C. For different heat degrees please check heat and pressure guide.

Temperature – correction factor : (20C x 1) (100 C x 0,95) (150 C x 0,90) (200 C x 0,83) (250 C x 0,60)

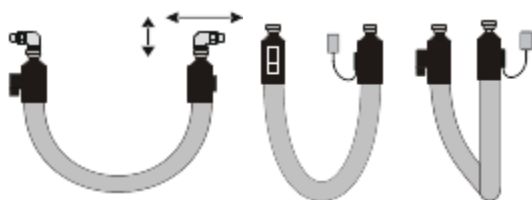
Mandatory conditions to be considered during heated hose use

- Only experienced staff should work interfere with heated hoses. Hot glue under pressure can cause serious injury.
- Hoses under risk must be checked and replaced.
- While removing the old hose ,temperature should ve below 40 C and pressure must be discharged is controlled manner.
- If the replacement hose contains solid/frozen glue,it should be heated up to 80 C before refitting and should be installed only after loosening the screw/fitting connections.Otherwise buckling occurs.
- Power supply is 230V 50-60Hz. Attention should be given to the protection of the cables and damaged cables must be repaired immediately.
- There should be homogeneous diffusion of the heat in the pipe and the substanve in the hose must be fully emulsified. Our advice,at the first study,even though the heat reaches the desired temperature,wait for a while fort heat evenly spread.

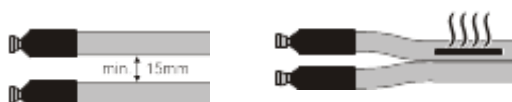


Sharp turns close to the cap during assembly (out of recommended radius) disturbs the structure of PTFE hose has a risk of explosion.

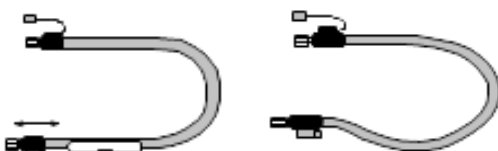
The suspension of the hose should have wide radius. Stiffer springs are recommended for this operation.



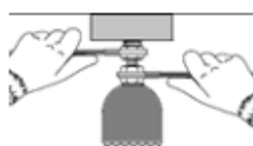
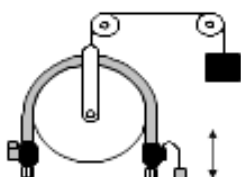
The direction of the hose should be observed during the assembly. Otherwise,buckling happens and damages the hose



Parallel hoses assembly must have a minimum spacing of 15 cm.



Hose will get heavy due to the agent in it.Measures should taken to support the sagging. (It is a common situation in manuel opretations)



Using a double switch during installation and removal,distortion and buckling of the record should be avoided.

Hose Cordset Pin Configurations

OGGAN[®]
Heating hose technology